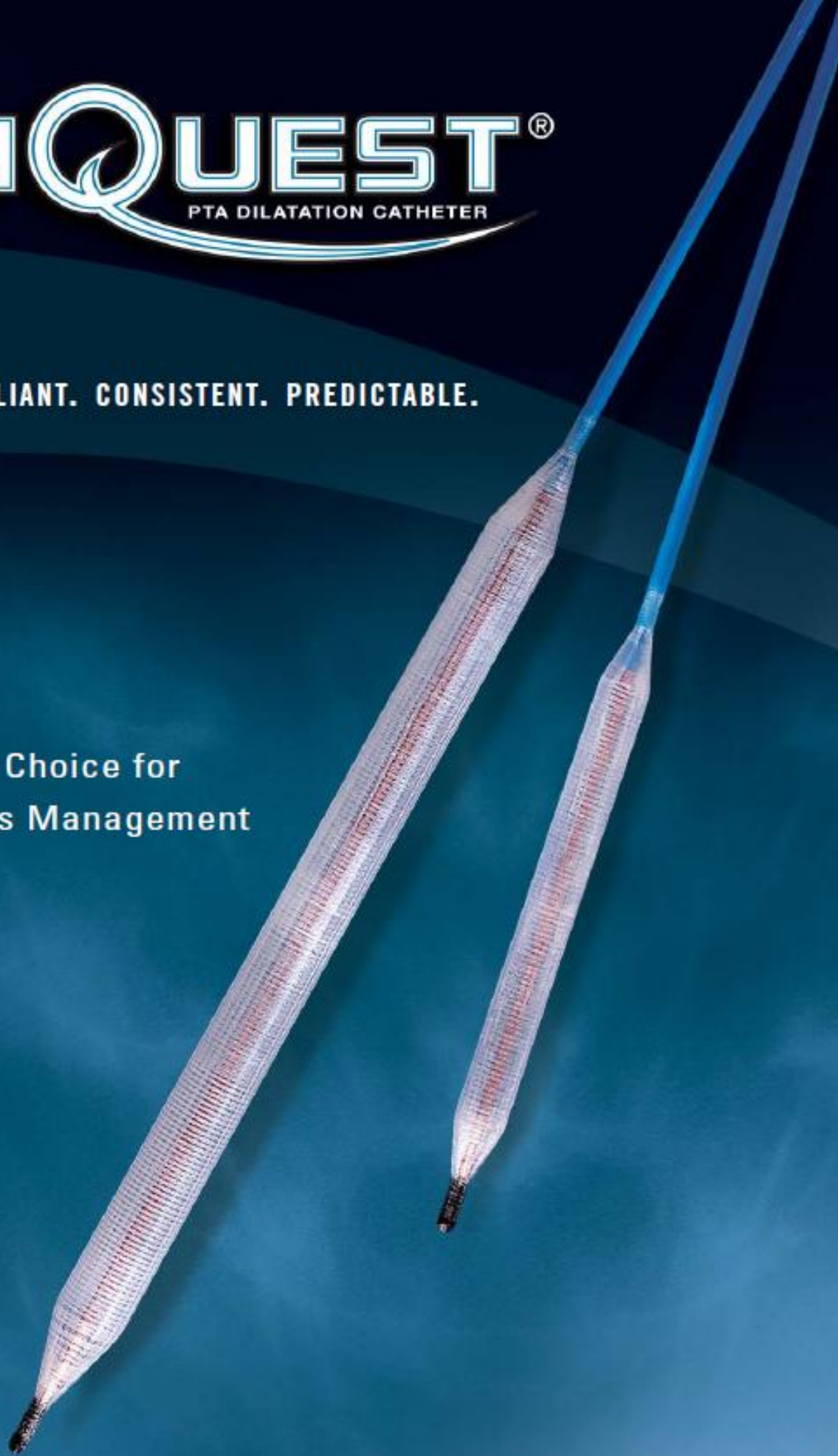


# CONQUEST<sup>®</sup>

PTA DILATATION CATHETER

ULTRA NON-COMPLIANT. CONSISTENT. PREDICTABLE.

The Balloon of Choice for  
Dialysis Access Management



# CONQUEST<sup>®</sup>

PTA DILATATION CATHETER



**ULTRA NON-COMPLIANT. CONSISTENT. PREDICTABLE.**

*Coaxial shaft design  
promotes rapid inflation  
and deflation*

*"Venous stenosis in the outflow may be 'rock hard'  
and require high-pressure balloons (bursting pressures  
of 25 to 30 atmospheres), as well as more  
prolonged inflation periods."*

**NKF K/DOQI GUIDELINES\*\***

*Radiopaque MaxTapered Tip, designed to  
function as a dilator, allows for sheathless entry*

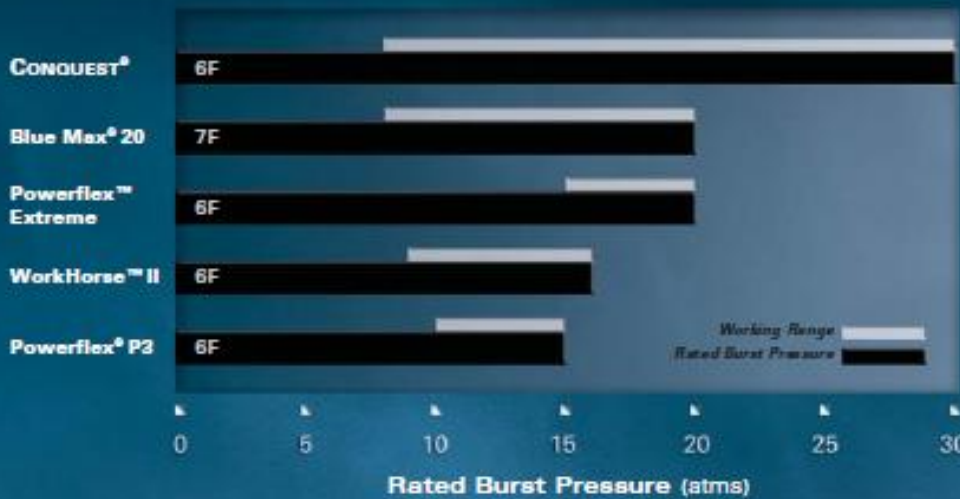
The ultra non-compliant CONQUEST® PTA dilatation catheter gives the clinician ultimate control at any pressure.

CONQUEST® – The Balloon of Choice for Dialysis Access Management.



- **ULTRA NON-COMPLIANT.** Puncture resistant balloon material concentrates maximum dilation force, within the entire working range, at the lesion.

*The Largest Working Range of any Balloon*



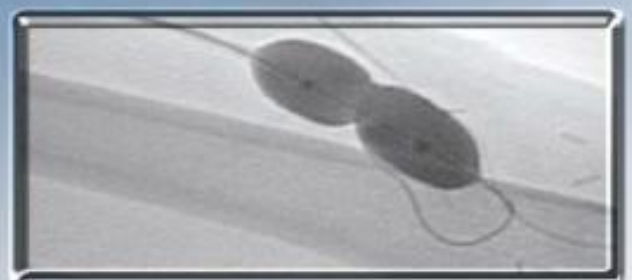
Non-compliant balloons can be inflated to higher pressures without overexpansion of the normal vessel.

Rated burst pressure and introducer sheath requirement for 7x4 balloon. Information taken directly from each manufacturer's product brochure.

- **CONSISTENT.** Reliable performance from nominal pressure through rated burst pressure.
- **PREDICTABLE.** There is virtually no growth between nominal pressure and rated burst pressure of up to 30atm, without overexpansion of the normal vessel.



CONQUEST® - Balloon Expanded Beyond Nominal Pressure<sup>1</sup>



Semi-Compliant Balloon Expanded Beyond Nominal Pressure<sup>1</sup>

# CONQUEST®

PTA DILATATION CATHETER

## CONQUEST® PRODUCT OFFERING

Shaft Length			Balloon Size		RBP* (atm)	Nominal Pressure* (atm)	Sheath Size (Fr)
50 cm	75 cm	120 cm	Diameter (mm)	Length (cm)			
● CQ-5052	● CQ-7552		5	2	30	8	6
● CQ-5054	● CQ-7554	● CQ-12054 ***	5	4	30	8	6
● CQ-5058	● CQ-7558		5	8	27	8	6
● CQ-5062	● CQ-7562	● CQ-12062 ***	6	2	30	8	6
● CQ-5064	● CQ-7564	● CQ-12064 ***	6	4	30	8	6
● CQ-5068	● CQ-7568		6	8	27	8	6
● CQ-5072	● CQ-7572	● CQ-12072 ***	7	2	30	8	6
● CQ-5074	● CQ-7574	● CQ-12074 ***	7	4	30	8	6
● CQ-5076	● CQ-7576		7	6	27	8	6
● CQ-5078	● CQ-7578		7	8	27	8	6
● CQ-5082	● CQ-7582	● CQ-12082 ***	8	2	27	8	6
● CQ-5083	● CQ-7583		8	3	27	8	6
● CQ-5084	● CQ-7584	● CQ-12084 ***	8	4	27	8	6
● CQ-5086	● CQ-7586		8	6	25	8	6
● CQ-5088	● CQ-7588		8	8	25	8	6
● CQ-5092	● CQ-7592		9	2	26	8	7
● CQ-5094	● CQ-7594	● CQ-12094 ***	9	4	26	8	7
	● CQ-75102		10	2	24	8	7
	● CQ-75104	● CQ-120104 ***	10	4	24	8	7
	● CQ-75122		12	2	20	8	8
	● CQ-75124		12	4	20	8	8

CALIBER™ Inflation Device REORDER CODE CL3030

† RBP (Rated Burst Pressure): the pressure at which Bard has 95% confidence that 99.9% of the balloons will not burst at or below upon single inflation

\* Nominal pressure: the pressure at which the balloon reaches its labeled diameter

\*\* 2006 NKF K/DOQI Guidelines

\*\*\* Please contact your local Bard Peripheral Vascular Sales Representative for availability of sizes.



PHYSICIAN'S SIGNATURE

<b>AUSTRIA</b>	Bard Medica SA, Thaliastrasse 125A/1/b, 1160 Wien, Austria, Tel: +43 14 949130, Fax: +43 14 94913030
<b>BENELUX</b>	Bard Benelux n.v., Hagelberg 2, 2250 Olen, Belgium, Tel: +32 14 290950, Fax: +32 14 290955
<b>CZECH REP</b>	Bard Czech Republic s.r.o., Taborska 619, 140 00 Prague, Czech Republic, Tel: +420 242 408030, Fax: +420 242 410185
<b>FRANCE</b>	Bard France SAS, Av. Joseph Kessel 164-166, Parkile P14, 78900 Voisins-le-Bretonneux, France, Tel: +33 1 39305658, Fax: +33 1 39305659
<b>GERMANY</b>	C.R. Bard GmbH, Waachhausstrasse 6, 70227 Karlsruhe, Germany, Tel: +49 721 944550, Fax: +49 721 9446111
<b>GREECE</b>	Bard Hellas SA, 22, Alkiviadou St & 72, Vouliagmenis Av, 16075 Glyfada, Greece, Tel: +30 210 9680770, Fax: +30 210 9628810
<b>IRELAND</b>	Bard Ltd, Arena House, Arena Road, Sandycroft, Dublin 18, Ireland, Tel: +353 121 30700, Fax: +353 121 30004
<b>ITALY</b>	Bard S.p.A., Via Cina 444, 00144 Roma, Italy, Tel: +39 06 524931, Fax: +39 06 5290852
<b>NORDIC</b>	Bard Norden AB, Karbingatan 22, 254 67 Helsingborg, Sweden, Tel: +46 42 380000, Fax: +46 42 380010
<b>POLAND</b>	Bard Poland sp.z o.o., ul. Cybembeyki 7B, 02-677 Warsaw, Poland, Tel: +48 22 3210830, Fax: +48 22 3210838
<b>PORTUGAL</b>	C.R. Bard Portugal LDA, Rua Castiño 13D-2A, 1250-066 Lisboa, Portugal, Tel: +351 21 3190330, Fax: +351 21 3190339
<b>SPAIN</b>	Bard de Espana S.A., Avda. Diagonal 652-656, Edificio A, 4a planta, 08034 Barcelona, Spain, Tel: +34 93 2537900, Fax: +34 93 2537934
<b>SWITZERLAND</b>	Bard Medica SA, Seesstrasse 64, 8942 Oberrieden/Zürich, Switzerland, Tel: +41 44 7225300, Fax: +41 44 7225370
<b>UK</b>	Bard Limited, Forest House, Tilgate Forest Business Park, Brighton Road, Crawley, West Sussex RH11 9BP, UK, Tel: +44 1293 627888, Fax: +44 1293 652428

### 1. Data on File.



Please consult product labels and package inserts for indications, contraindications, hazards, warnings, cautions, and information for use.

Bard, Conquest, and Med01 are trademarks and/ or registered trademarks of C.R. Bard, Inc., or an affiliate. All other trademarks are the property of their respective owners.

Copyright © 2009, C.R. Bard, Inc. All Rights Reserved.

5214 1D Rev. 0

0086

**BARD** | PERIPHERAL VASCULAR